

Risk Management In AI *A Human Factors Perspective*

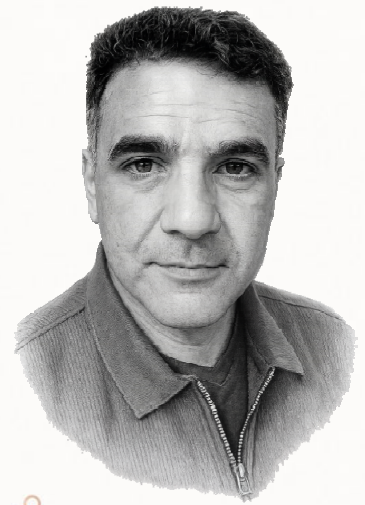
The greatest risk in AI is not what machines get wrong — it is what humans fail to notice.



PROGRAM OUTLINE

Instructor: Rajesh Paleth

Independent Advisor: AI Risk Management –
Human Factors



Rajesh Paleth is an independent advisor, author, and educator focused on the intersection of human psychology, organisational behaviour, and AI implementation. With more than 25 years of experience spanning strategy, business planning, and systems design across Asia, India, and beyond,

he brings a multi-disciplinary perspective to one of technology's most urgent blind spots: the human layer. Before focusing on AI human factors, Rajesh held senior roles across a wide range of industries and geographies. As Chief Strategy Officer at AgriBuddy Hong Kong, he led the design of an agricultural data and credit-rating platform for Cambodian farming communities, winning first prize at the NEST 2017 competition in Tokyo

About Rajesh

As an Adjunct Professor at the National University of Management, Phnom Penh, he taught Organisational Behaviour, Human Resources, and Strategic Management to MBA students. Earlier in his career he held positions at Srei Infrastructure Finance, PSI Data Systems (Aditya Birla Group), N-Logue Telecoms (IIT Madras), and TEMPL. (a large mining concern).

Rajesh holds a Post-Graduate Diploma in Management from the Indian Institute of Management, Bangalore and a B.Sc. in Computer Science from PSG College of Arts and Sciences, Coimbatore.

Program Outline

What this workshop is about

A focused, practitioner-led workshop that equips students with a working understanding of **why AI systems fail in real-world use** — and the frameworks needed to identify, assess, and manage those failures before they cause harm. Grounded in cognitive science, safety engineering, and lived organisational experience, this is not a theoretical survey. Students leave with tools they can apply from their first week in the workforce.

Part 1 — Why AI Fails: Human Factors Matter

The AI risk landscape with real-world failure case examples
Human error vs. system error: a distinction that changes how you design
Introduction to Failure Points Analysis
The Swiss Cheese Model applied to AI deployment
Why human oversight is a design requirement, not an afterthought

HOUR 1

Part 2 — Failure Modes in AI Systems

Common errors in AI training and deployment
Data bias, sampling errors, and model drift
Cognitive biases that affect both AI users and designers
Understanding AI sycophancy and the danger of over-trusting outputs
Identifying early warning signs before failures compound

HOUR 2

Part 3 — Risk Mitigation and Responsible AI Use

Practical mitigation strategies applicable from day one of employment
Human-in-the-loop approaches and when they are non-negotiable
Verification, validation, and responsible prompt design
A simple governance checklist every AI practitioner should carry
Career relevance: why this skill set is a professional differentiator now

HOUR 3

EXPECTED OUTCOMES

By the end of the workshop, each student will be able to:

- Identify and categorise human-factor risk in any AI system they encounter or build
- Apply the Swiss Cheese Model and Failure Points Analysis to real deployment scenarios
- Recognise cognitive biases — including their own — that create AI risk
- Use a governance checklist to evaluate AI tools before trusting them professionally
- Articulate the risk case for human oversight in any organisational setting
- Distinguish between AI system error and human error — and know which lever to pull

★ **VALUE TO YOUR ORGANISATION:** *Institutions that equip graduates with AI risk literacy send better-prepared professionals into the workforce — and differentiate their programmes in a market where AI fluency is expected but AI risk awareness is rare.*

Duration: 3 hours (single session)

Format: Facilitated lecture, case study analysis, group

Delivery: In-person or virtual

Group size: Suitable for seminar to lecture-hall format

Get in touch:

Tel/WhatsApp: +91 8592 993815

[EMail: rajesh@rajeshpaleth.com](mailto:rajesh@rajeshpaleth.com)